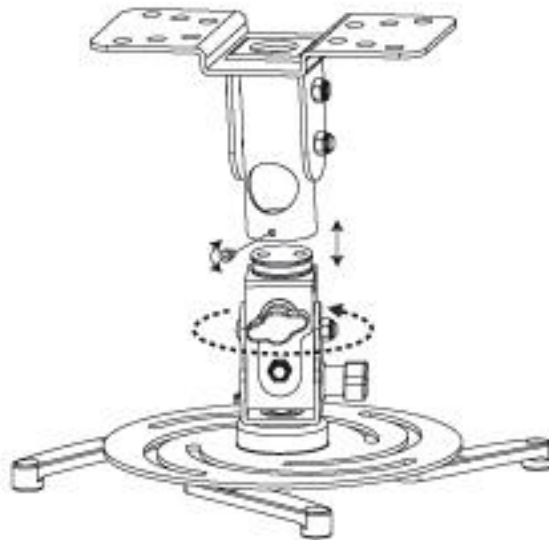


Installation Guide

Mount Bracket for Projectors and Beamers VM-PR04 – Article: 50502

Max. lifting capacity 10kg



Technical changes reserved!

Due to further developments illustrations, functioning steps and technical data can differ insignificantly.

Updating the documentation

If you have suggestions for improvement or have found any irregularities please contact us.

Introduction

Thank you for purchasing this quality product. **To minimize the risk of injury we urge that our clients take some basic safety precautions when using this device. Please read the operation instructions carefully and make sure you have understood its content.**

Attention

The wall/ceiling has to carry at least 10 kg. If this is not the case, the wall has to be reinforced. The installation has to be carried out by a pro. Errors can lead to severe injuries or death.

Attention

You must comply with the safety regulations. Use suitable tools to avoid injuries.

Achtung

Vor der Installation muss diese Anleitung gelesen und ganz verstanden sein, um Personen- und/oder Sachschäden zu vermeiden. Bewahren Sie diese Anleitung leicht zugänglich für spätere Arbeiten auf.



The wall has to be stable enough to carry the weight of the TV. Install your TV-mount bracket on dry walls/ceilings, on previously determined studs or mounting rails or with special rawl plugs.



Do not mount it on vibrating, moving walls or on walls or ceilings exposed to shocks. This could damage your TV or the mounting surface.



Do not mount it near heating elements, fireplaces, air conditioners, in direct sunlight or near other sources of heat. Failures can damage the beamer/projector or constitute a risk of fire.



The installing should be carried out by at least two qualified people. The falling of the beamer/projector or its improper installing can cause damage and injuries.

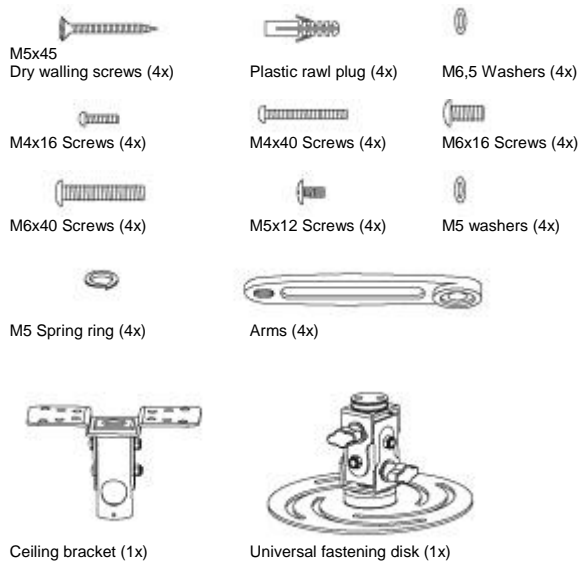


Recommended mounting surfaces: wooden beams, concrete and solid walls. If the installing is carried out on other surfaces, please use special mounting brackets from the local ironware trades.

Safety Information

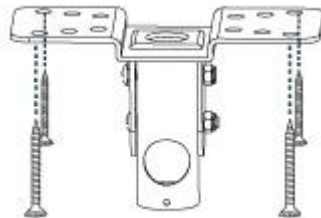
- Before installing the mount bracket, this manual guide should be carefully read and fully understood
- The mounting has to be carried out by two qualified people.
- Do not use defective parts!
- Only suitable for stone, concrete walls/ceilings, solid wood and wooden beams. By wood do not use rawl plugs. The wood has to be at least 5 mm pre-drilled.
- The wall/ceiling has to carry the weight of the beamer/projector.
- If you are uncertain about the wall quality, consult a specialist! The manual guide does not replace special training.

In the package you should find the following parts. If a small piece is missing or another is needed purchase it from the local ironware trade.



Step 1

Fasten the ceiling panel with the dry walling screws to the ceiling, so that the screws penetrate the beams. If necessary the plastic rawl plugs must be used for fixture so that the mount bracket can support the weight of your projector/beamer. The mounting on other ceilings or wall types is described at the end of this guide.



Step 2

Fasten the 4 arms on the universal fastening disk with the M5x12 screws, the washers and the spring rings. Do not tighten the screws completely.

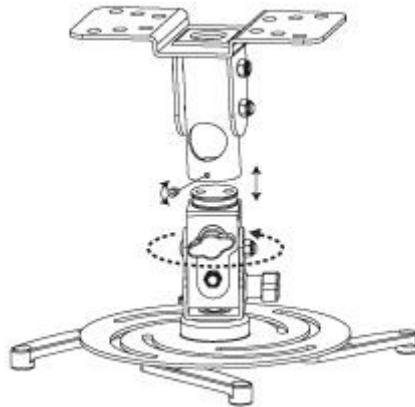


Step 3

Mount the projector support to the arms. For this, there are some screw sizes enclosed. If you do not find any suitable screws, contact the manufacturer of your projector and ask for the right screw size. Then screw in tightly all the screws from the steps 2 and 3.

Step 4

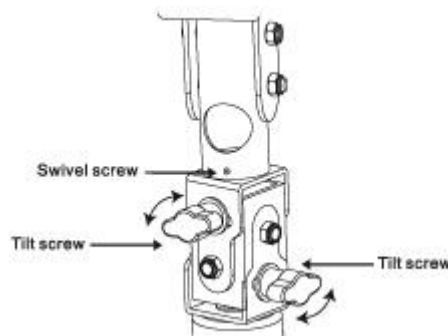
Now the universal fastening disk is attached to the ceiling mount. The suitable fixing screws are screwed into the rotary ring/swivel.



Adjustment

You can change the inclination/tilt of your mount bracket by carefully moving the universal fastening disk in the right position. Both tilt adjusting screws must be tightened to fix the mount bracket.

To change the direction of the projector, loosen the fixing screws slightly with an allen key, rotate the mount bracket in the desired direction and tighten again firmly the fixing screws.



Installing on a drywall construction

For a safe drywall mounting please use two wooden beams/rails placed at least at a 30 cm distance from each other.

1. Use a metal detector to find two adjoining rails and mark their position.
2. Place the wall plate on the desired place with the help of a second person and the level.
3. Mark right and left the upper, middle and lower oblong holes, that are above the beams or rails.
4. All in all 4 or 6 places have to be marked.
5. First pre-drill a 3 mm hole in the wall.
6. Assisted by a second person, position the wall plate on the wall and place the oblong holes over the drilled holes so that they match.
7. In each hole insert a hex lag bolt with washer.
8. Tighten the hex lag bolts clockwise.

Beware: Do not fasten the bolts too tightly in order to avoid causing damage to the wall.

Beware: Do not let go of the wall plate, before it is properly fixed.

Installation on a concrete wall

Attention: concrete rawl wall plugs or special rawl plugs must be used from the local ironware trades.

1. First place the wall plate on the wall with the help of the bubble level.
2. Mark right and left the upper, middle and lower oblong holes.
3. First drill bores with a 10 mm – masonry drill.
4. Insert in every hole a concrete rawl plug and if necessary hammer it carefully in the borehole.
5. When the rawl plugs are inserted, place the wall plate over them so that the position of the rawl plugs coincides with that of the oblong holes.
6. Screw the hex lag bolts in the rawl plugs, tighten them lightly and screw tightly only after all hex lag bolts have been already inserted.

Installation of TV-screen

1. This kit includes different screws with different lengths and diameters for an optimum mounting.
2. Put the TV-Screen on a soft surface and search the threaded holes on the back.
3. Determine the depth of the drilling by using a straw or toothpick.
4. If your TV-Screen has a concave back, use the spacer.
Tip: use the smallest possible spacer, to keep the distance screen - mounting support as small as possible.
5. Insert the spacer between the screen and the mounting support.
6. If a smaller screw (M4, M5 or M6) is used, please use a washer for every screw for improving the stability.



Final installing

Fix the mounting support on the screen, by placing the holes of the mount support over the threaded holes of the screen's backside.

Insert the suitable screws with washers in the holes and screw them in.

1. Screw in tightly with a cross-recess screwdriver.

Attention: The installing has to be carried out by at least two **qualified people**.

2. To complete the installing, hook both perpendicular brackets into the backside of the screen, in both horizontal cross bars.
3. When hooking into, make sure that the safety screws of the mount are not screwed in.

WilTec Wildanger Technik GmbH
Königsbenden 12 / 28
D-52249 Eschweiler

Important notice: The reprint or reproduction, even of excerpts, and any commercial use, even in part of this instructions manual require the written permission of Wiltec Wildanger Technik GmbH.

